



Permian Basin MPO

Interregional Planning & Environmental Linkage (PEL) Study

The Permian Basin Metropolitan Planning Organization (MPO) is evaluating the potential for creating new transportation solutions around the Midland and Odessa communities.

The purpose of a PEL is to consider future transportation improvements in a holistic way. A PEL:

- Focuses on engagement with community members and other stakeholders
- Explores potential solutions based on impacts to the environment, the community, and the economy
- Addresses long-term economic benefits, regional mobility, and safety
- Considers environmental stewardship in the context of identified needs



Save the date!

You are invited to participate in town hall events taking place **September 20th and 21st, 2021.**

Virtual options and survey will be provided on the Permian Basin MPO Facebook page beginning **September 20.**

Keep an eye on permianbasinmpo.com and contact Cameron Walker at cwalker@permianbasinmpo.com for further details.

The Permian Basin MPO is planning for a potential interregional corridor to provide freight and vehicular connectivity in and around the urbanized Midland-Odessa area. This corridor would not only serve to expand energy and freight production/distribution, but also to enhance mobility and safety of existing urbanized corridors. This PEL will identify, evaluate and screen potential corridors for future environmental evaluation.

A few of the questions we will be asking:

What does an interregional corridor look like to you?

What interregional points should we look at better connecting?

What transportation issues and solutions do you see within the study area?

Come meet the team in person and contribute to the transportation conversation:

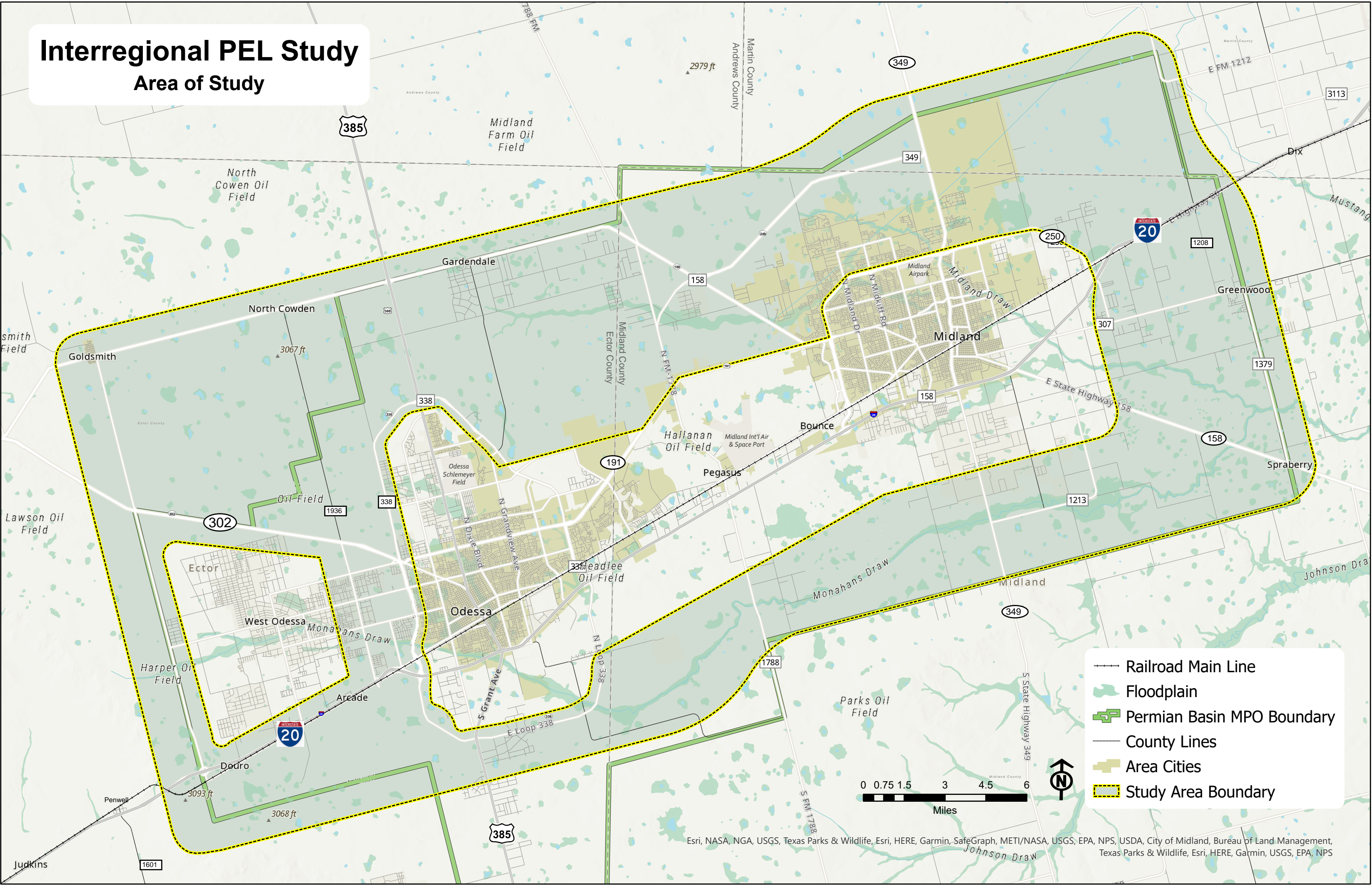
September 20th – Hispanic Cultural Center of Midland
1311 E. Wadley, Midland 6:00 - 8:00 PM

September 21st - Odessa College Campus
201 W University Blvd, Odessa 6:00 - 8:00 PM
Saulsbury Campus Center Building
Joe Zant Community Room (2nd Floor)

Virtually - <https://www.facebook.com/pbmpo>

Interregional PEL Study

Area of Study



- Railroad Main Line
- Floodplain
- Permian Basin MPO Boundary
- County Lines
- Area Cities
- Study Area Boundary

